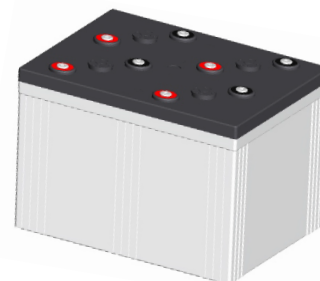


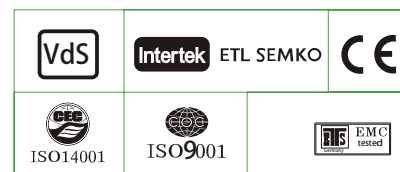
### Specification

Nominal Voltage	2V		
Nominal Capacity(10HR)	2500.0AH		
Dimensions	Length	490±3mm (19.29 inches)	
	Width	350±3mm (13.78 inches)	
	Container Height	339±3mm (13.35 inches)	
	Total Height (with Terminal)	349±3mm (13.74 inches)	
Approx Weight	Approx 133.6Kg (294.6lbs)		
Terminal	T11		
Container Material	ABS		
Rated Capacity	2626.0AH/131.3A	(20hr, 1.80V/cell, 25°C/77°F)	
	2500.0AH/250.0A	(10hr, 1.80V/cell, 25°C/77°F)	
	2175.0AH/435.0A	(5hr, 1.75V/cell, 25°C/77°F)	
	1890.0AH/630.0A	(3hr, 1.75V/cell, 25°C/77°F)	
	1517.5AH/1517.5A	(1hr, 1.60V/cell, 25°C/77°F)	
Max. Discharge Current	20000A (5s)		
Internal Resistance	Approx 0.25mΩ		
Operating Temp.Range	Discharge :	-15~50°C (5~122°F)	
	Charge :	0~40°C (32~104°F)	
	Storage :	-15~40°C (5~104°F)	
Nominal Operating Temp. Range	25±3°C (77±5°F)		
Cycle Use	Initial Charging Current less than 750.0A.Voltage		
	2.4V~2.5V at 25°C(77°F)Temp. Coefficient -5mV/°C		
Standby Use	No limit on Initial Charging Current Voltage		
	2.25V~2.3V at 25°C(77°F)Temp. Coefficient -3mV/°C		
Capacity affected by Temperature	40°C (104°F)	103%	
	25°C (77°F)	100%	
	0°C (32°F)	86%	
Self Discharge	GFM series batteries may be stored for up to 6 months		
	at 25°C(77°F) and then a freshening charge is required. For higher temperatures the time interval will be shorter.		



### Applications

- ◆ Tele-communication central station(wired or cellular)
- ◆ Power system communication, military communication, etc.
- ◆ Network communication including: data transmission, television signal transmission, etc.
- ◆ Uninterruptable Power System (UPS- for Telecom)



### Constant Current Discharge (Amperes) at 25°C (77°F)

F.V/Time	30min	45min	1h	2h	3h	4h	5h	6h	8h	10h	20h
1.85V/cell	1917.0	1520.0	1247.5	749.3	579.2	475.6	405.0	353.8	285.0	238.8	126.7
1.80V/cell	/	1599.2	1325.0	790.6	607.5	496.9	422.0	369.6	295.9	250.0	131.3
1.75V/cell	/	1681.5	1382.5	823.3	630.0	513.8	435.0	378.3	301.6	252.5	132.6
1.70V/cell	/	1744.8	1430.9	847.5	646.7	525.0	442.5	385.0	306.3	255.0	133.9
1.65V/cell	/	1820.8	1482.5	873.0	660.8	536.3	452.0	391.7	310.6	258.3	135.6
1.60V/cell	/	1870.0	1517.5	893.8	675.0	543.8	458.5	397.1	314.7	261.3	137.2

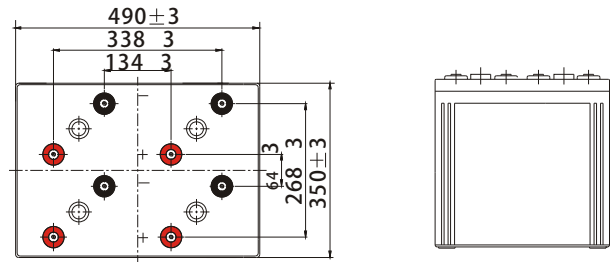
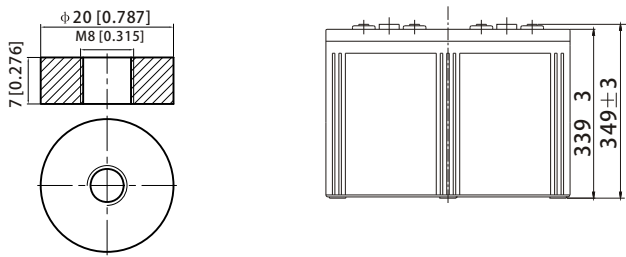
### Constant Power Discharge (Watts) at 25°C (77°F)

F.V/Time	30min	45min	1h	2h	3h	4h	5h	6h	8h	10h	20h
1.85V/cell	3663.5	2922.5	2413.0	1457.5	1131.9	932.8	797.9	699.0	565.6	474.9	252.2
1.80V/cell	/	3054.4	2548.6	1530.3	1181.6	971.2	827.7	727.3	585.5	496.5	260.9
1.75V/cell	/	3192.8	2647.5	1587.4	1222.2	1000.8	850.3	742.3	595.3	500.8	263.2
1.70V/cell	/	3290.1	2725.8	1627.3	1249.8	1018.5	862.4	754.2	603.9	505.5	265.7
1.65V/cell	/	3414.1	2808.0	1669.1	1271.6	1036.8	877.8	764.9	611.0	511.1	268.7
1.60V/cell	/	3473.5	2854.4	1698.1	1292.1	1046.7	886.9	773.1	617.7	516.2	271.4

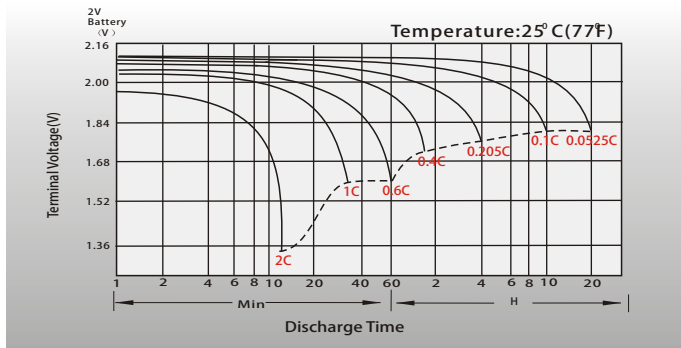
## Dimensions

### T11 Terminal

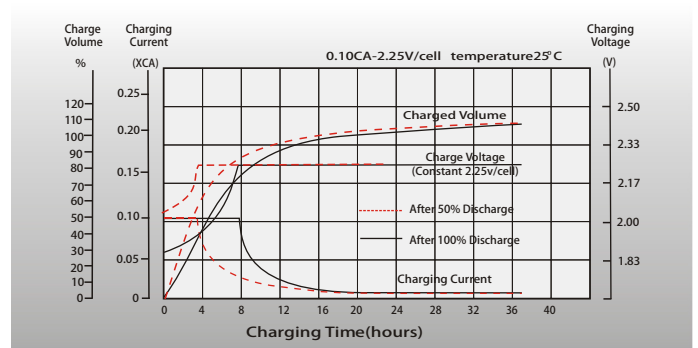
Unit: mm [inches]



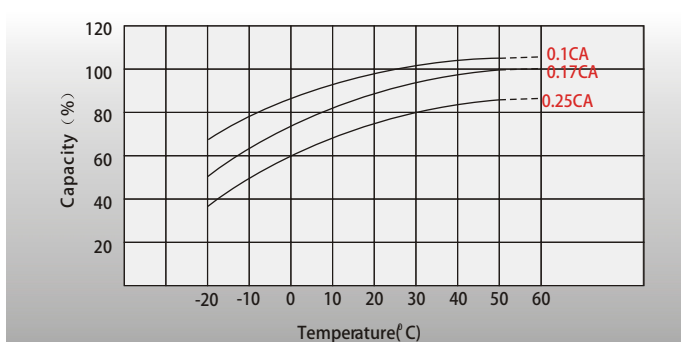
## Discharge Characteristics



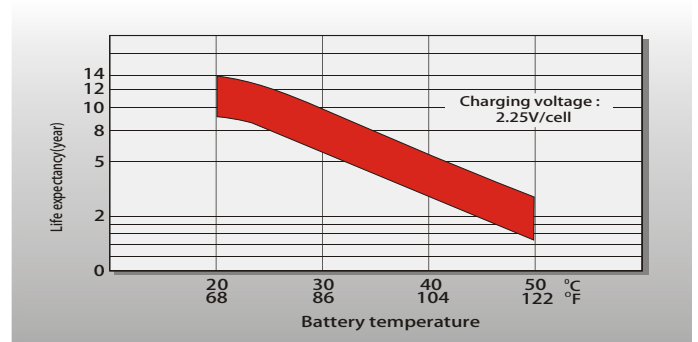
## Float Charging Characteristics



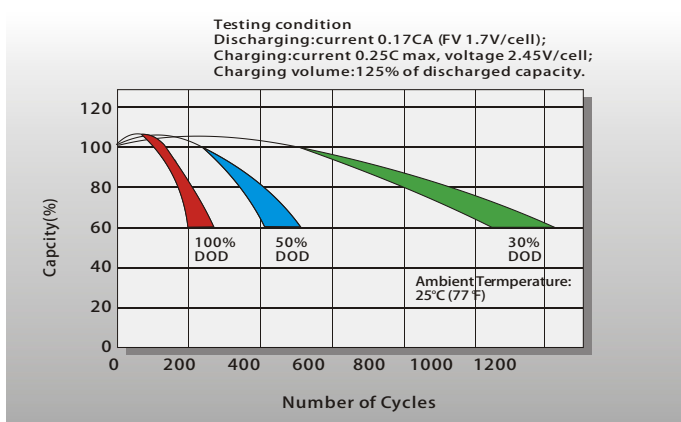
## Temperature Effects in Relation to Battery Capacity



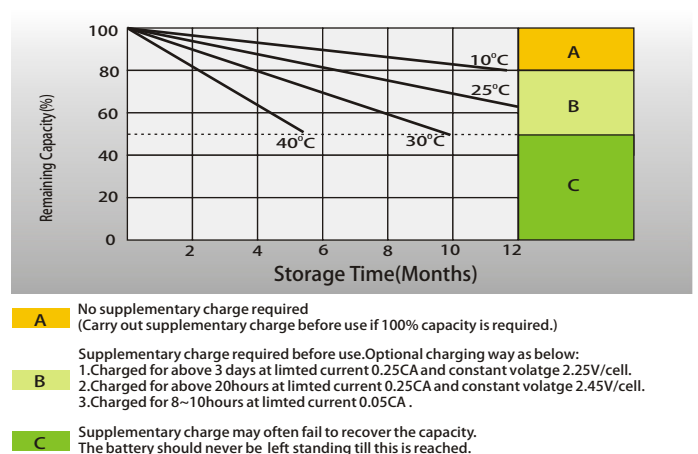
## Effect of Temperature on Long Term Float Life



## Cycle Life in Relation to Depth of Discharge



## Self Discharge Characteristics



## Contact US

### Greensun Solar Energy Tech Co., Limited

\* Add: No 2000 Changjiang West Road, Shushan District Hefei China

\* Email: info@greensunpv.com

\* Phone: 0551-69866216 Fax: 0551-69866218 Mob: 0086-158 5511 0194

\* Web: <https://www.greensunpv.com> & <https://greensunpv.en.alibaba.com>