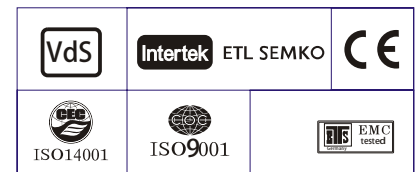


**Specification**

Nominal Voltage	2V	
Nominal Capacity(10HR)	1200.0AH	
Dimensions	Length	475±3mm (18.70 inches)
	Width	175±2mm (6.89 inches)
	Container Height	328±3mm (12.91 inches)
	Total Height (with Terminal)	350±3mm (13.78 inches)
Approx Weight	Approx 65.8kg (145.1lbs)	
Terminal	T11	
Container Material	ABS	
Rated Capacity	1260.0 AH/63.0A	(20hr, 1.80V/cell, 25°C/77°F)
	1200.0 AH/120.0A	(10hr, 1.80V/cell, 25°C/77°F)
	1044.0 AH/208.8A	(5hr, 1.75V/cell, 25°C/77°F)
	907.2AH/302.4A	(3hr, 1.75V/cell, 25°C/77°F)
	728.4 AH/728.4A	(1hr, 1.60V/cell, 25°C/77°F)
Max. Discharge Current	9600A (5s)	
Internal Resistance	Approx 0.4mΩ	
Operating Temp. Range	Discharge :	-15~50°C (5~122°F)
	Charge :	0~40°C (32~104°F)
	Storage :	-15~40°C (5~104°F)
Nominal Operating Temp. Range	25±3°C (77±5°F)	
Cycle Use	Initial Charging Current less than 360.0A. Voltage 2.4V~2.5V at 25°C(77°F)Temp. Coefficient -5mV/°C	
	Standby Use No limit on Initial Charging Current Voltage 2.25V~2.3V at 25°C(77°F)Temp. Coefficient -3mV/°C	
Capacity affected by Temperature	40°C (104°F)	103%
	25°C (77°F)	100%
	0°C (32°F)	86%
Self Discharge	GFM series batteries may be stored for up to 6 months at 25°C(77°F) and then a freshening charge is required. For higher temperatures the time interval will be shorter.	


**Applications**

- ◆ Tele-communication central station(wired or cellular)
- ◆ Power system communication, military communication, etc.
- ◆ Network communication including: data transmission, television signal transmission, etc.
- ◆ Uninterruptable Power System (UPS- for Telecom)


**Constant Current Discharge (Amperes) at 25°C (77°F)**

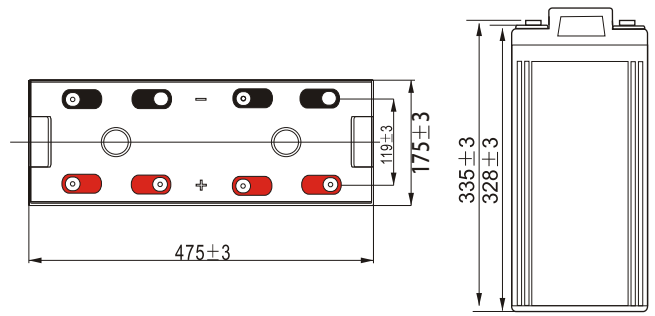
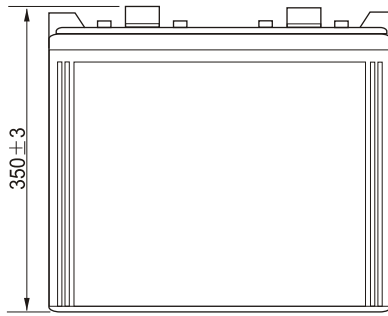
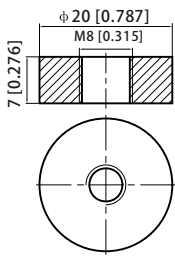
F.V/Time	30min	45min	1h	2h	3h	4h	5h	6h	8h	10h	20h
1.85V/cell	920.1	729.6	598.8	359.7	278.0	228.3	194.4	169.8	136.8	114.6	60.8
1.80V/cell	987.3	767.6	636.0	379.5	291.6	238.5	202.6	177.4	142.1	120.0	63.0
1.75V/cell	1045.5	807.1	663.6	395.2	302.4	246.6	208.8	181.6	144.8	121.2	63.6
1.70V/cell	1097.0	837.5	686.8	406.8	310.4	252.0	212.4	184.8	147.0	122.4	64.3
1.65V/cell	1150.7	874.0	711.6	419.0	317.2	257.4	217.0	188.0	149.1	124.0	65.1
1.60V/cell	1190.4	897.6	728.4	429.0	324.0	261.0	220.1	190.6	151.1	125.4	65.8

**Constant Power Discharge (Watts) at 25°C (77°F)**

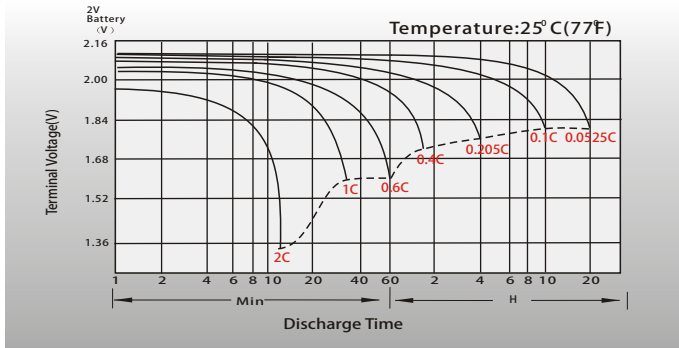
F.V/Time	30min	45min	1h	2h	3h	4h	5h	6h	8h	10h	20h
1.85V/cell	1758.5	1402.8	1158.3	699.6	543.3	447.8	383.0	335.5	271.5	227.9	121.0
1.80V/cell	1871.7	1466.1	1223.3	734.6	567.2	466.2	397.3	349.1	281.0	238.3	125.2
1.75V/cell	1966.9	1532.6	1270.8	761.9	586.7	480.4	408.1	356.3	285.7	240.4	126.3
1.70V/cell	2046.5	1579.2	1308.4	781.1	599.9	488.9	413.9	362.0	289.9	242.6	127.5
1.65V/cell	2130.7	1638.8	1347.8	801.2	610.4	497.7	421.3	367.2	293.3	245.3	129.0
1.60V/cell	2182.0	1667.3	1370.1	815.1	620.2	502.4	425.7	371.1	296.5	247.8	130.3

## Dimensions

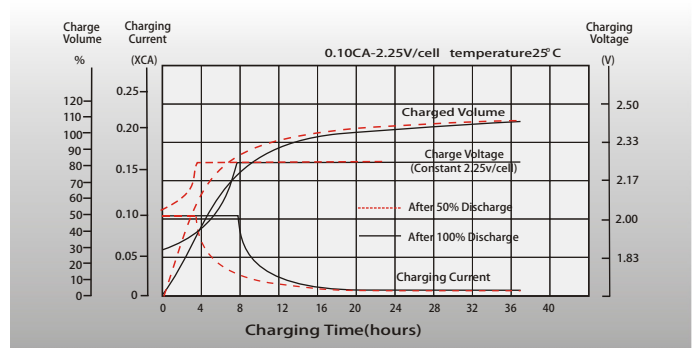
### T11 Terminal Unit: mm [inches]



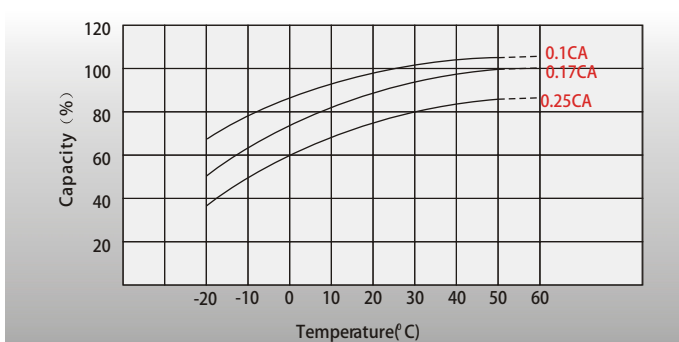
## Discharge Characteristics



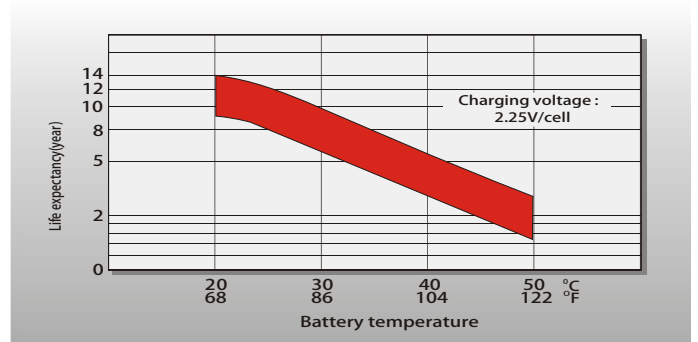
## Float Charging Characteristics



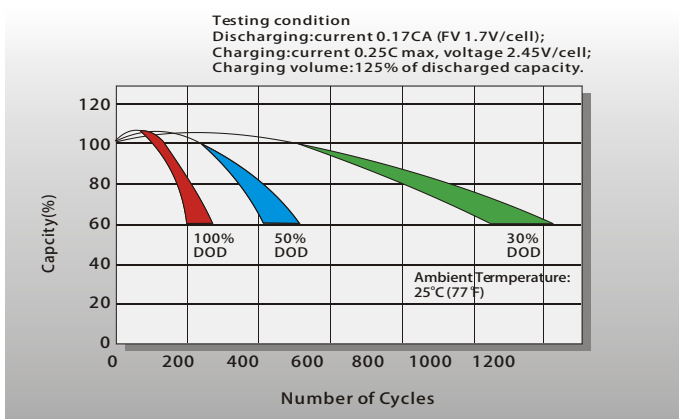
## Temperature Effects in Relation to Battery Capacity



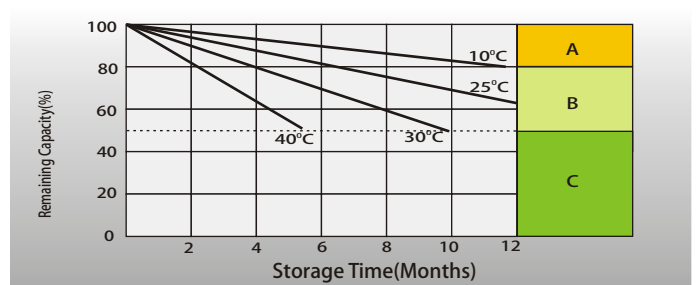
## Effect of Temperature on Long Term Float Life



## Cycle Life in Relation to Depth of Discharge



## Self Discharge Characteristics



- A** No supplementary charge required  
(Carry out supplementary charge before use if 100% capacity is required.)
- B** Supplementary charge required before use. Optional charging way as below:  
1. Charged for above 3 days at limited current 0.25CA and constant voltage 2.25V/cell.  
2. Charged for above 20 hours at limited current 0.25CA and constant voltage 2.45V/cell.  
3. Charged for 8~10 hours at limited current 0.05CA.
- C** Supplementary charge may often fail to recover the capacity.  
The battery should never be left standing till this is reached.

## Contact US

## Greensun Solar Energy Tech Co., Limited

- \* Add: No 2000 Changjiang West Road, Shushan District Hefei China
- \* Email: info@greensunpv.com
- \* Phone: 0551-69866216 Fax: 0551-69866218 Mob: 0086-158 5511 0194
- \* Web: <https://www.greensunpv.com> & <https://greensunpv.en.alibaba.com>