

Specification

Nominal Voltage	2V	
Nominal Capacity(10HR)	600.0AH	
Dimension	Length	300 ±3mm (11.81 inches)
	Width	175 ±2mm (6.89 inches)
	Container Height	330 ±3mm (12.99 inches)
	Total Height (with Terminal)	340 ±3mm (13.39 inches)
Approx Weight	Approx 36.5 kg (80.5lbs)	
Terminal	T11	
Container Material	ABS	
Rated Capacity	640.0 AH/32.0A	(20hr,1.80V/cell,25°C/77°F)
	600.0 AH/60.00A	(10hr,1.75V/cell,25°C/77°F)
	516.0 AH/103.2A	(5hr,1.75V/cell,25°C/77°F)
	448.8 AH/149.6A	(3hr,1.75V/cell,25°C/77°F)
	352.0 AH/352.0A	(1hr,1.67V/cell,25°C/77°F)
Max. Discharge Current	4200A (5s)	
Internal Resistance	Approx 0.66mΩ	
Operating Temp.Range	Discharge : -20 ~55°C (-4 ~131°F)	
	Charge : 0~40°C (32~104°F)	
	Storage : -20 ~50°C (-4 ~122°F)	
Nominal Operating Temp. Range	25 ±3°C (77 ±5°F)	
Cycle Use	Initial Charging Current less than 150.0A.Voltage	
	2.4V~2.5V at 25°C(77 °F)Temp. Coefficient -5mV/°C	
Standby Use	No limit on Initial Charging Current Voltage	
	2.25V~2.3V at 25°C(77°F)Temp. Coefficient -3mV/°C	
Capacity affected by Temperature	40°C (104°F)	103%
	25°C (77°F)	100%
	0°C (32°F)	86%
Self Discharge	GEL series batteries may be stored for up to 9 months	
	at 25 °C(77°F) and then a freshening charge is required. For higher temperatures the time interval will be shorter.	



Applications

- ◆ Telecommunications
- ◆ Solar system
- ◆ Wind power system
- ◆ Wheelchair
- ◆ Floor cleaning machines
- ◆ Golf trolley
- ◆ Boats



Constant Current Discharge (Amperes) at 25°C (77°F)

F.V/Time	20min	30min	45min	1h	2h	3h	4h	5h	6h	7h	8h	9h	10h	20h
1.85V/cell	522.0	410.4	312.8	271.8	173.4	132.2	109.5	94.6	81.6	72.3	65.2	59.5	56.3	30.7
1.80V/cell	599.4	458.4	345.6	300.0	187.8	141.6	116.1	99.4	85.7	75.6	68.3	62.7	58.9	32.0
1.75V/cell	673.2	504.0	372.8	320.4	198.9	149.6	121.7	103.2	88.7	78.3	70.5	64.5	60.0	32.6
1.70V/cell	725.4	540.0	396.0	339.6	210.9	155.8	125.6	106.3	91.8	80.9	72.6	66.2	61.4	33.1
1.67V/cell	754.2	561.6	410.4	352.0	216.3	160.8	128.7	108.6	93.3	82.1	73.7	67.1	62.2	33.4
1.60V/cell	817.2	600.0	440.8	373.8	225.0	167.2	133.5	112.0	95.6	83.8	75.0	68.5	63.4	33.9

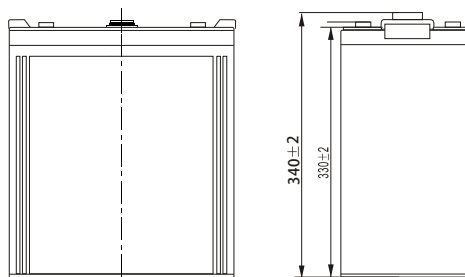
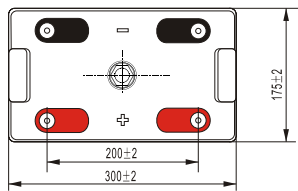
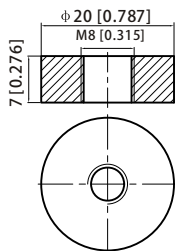
Constant Power Discharge (Watts) at 25°C (77°F)

F.V/Time	20min	30min	45min	1h	2h	3h	4h	5h	6h	7h	8h	9h	10h	20h
1.85V/cell	991.3	784.7	601.8	525.1	336.2	257.0	213.7	185.2	160.4	142.4	128.7	117.7	111.5	60.9
1.80V/cell	1123.3	868.2	658.7	576.6	362.3	274.3	225.7	194.0	167.9	148.5	134.5	123.6	116.2	63.3
1.75V/cell	1247.4	944.0	704.2	612.6	382.7	289.2	235.8	200.5	173.1	153.5	138.5	127.1	118.4	64.5
1.70V/cell	1329.7	1004.4	745.3	646.9	403.9	300.2	242.7	206.2	178.9	158.3	142.4	130.3	121.1	65.3
1.67V/cell	1366.6	1030.5	765.4	665.3	412.1	308.6	248.0	209.8	181.3	160.1	144.1	131.8	122.3	65.8
1.60V/cell	1464.4	1093.8	817.7	702.7	426.6	319.4	256.5	215.6	185.2	163.0	146.5	134.3	124.5	66.7

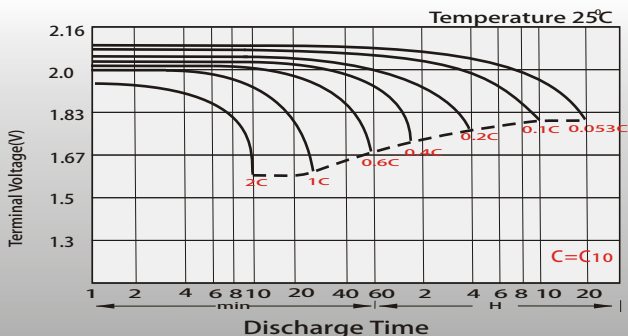
Dimensions

T11 Terminal

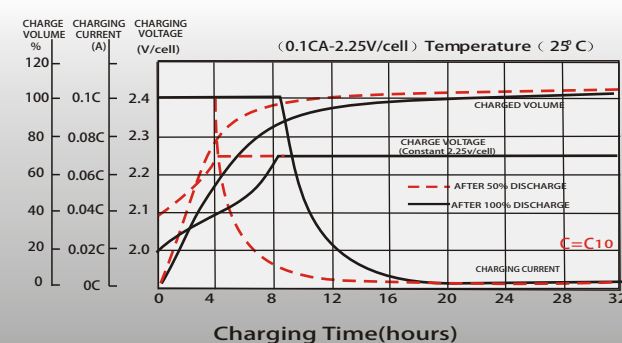
Unit: mm [inches]



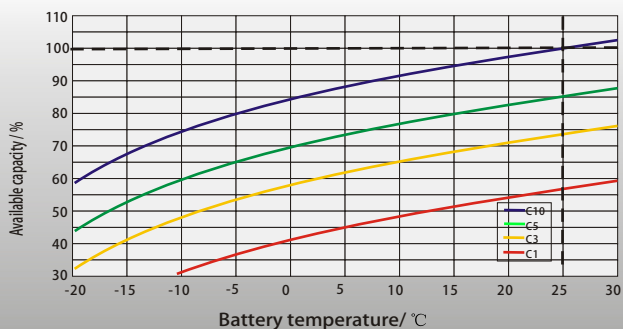
Discharge Characteristics



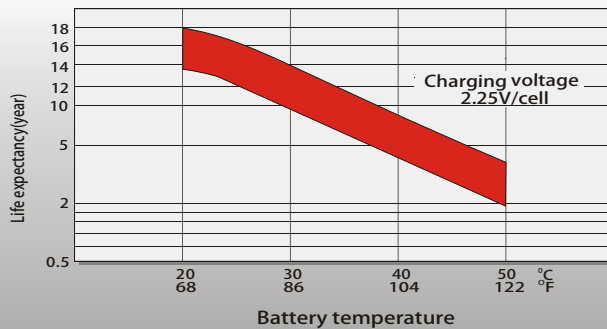
Float Charging Characteristics



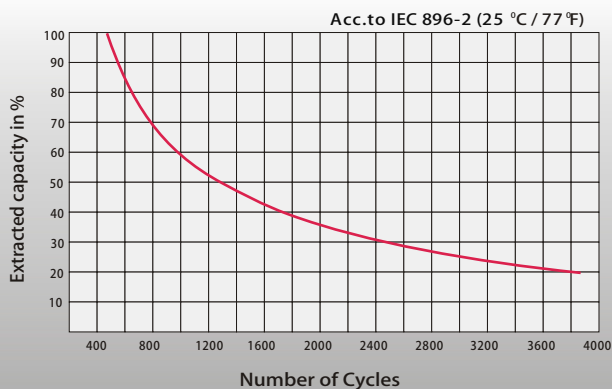
Temperature Effects in Relation to Battery Capacity



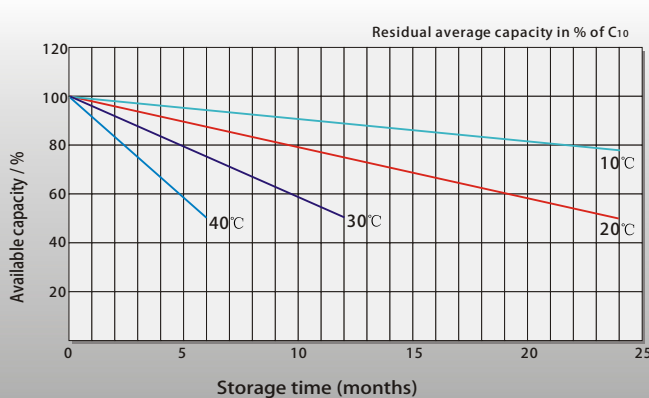
Effect of Temperature on Long Term Float Life



Cycle Life in Relation to Depth of Discharge



General Relation of Capacity VS. Storage Time



Contact US

Greensun Solar Energy Tech Co., Limited

- * Add: No 2000 Changjiang West Road, Shushan District Hefei China
- * Email: info@greensunpv.com
- * Phone: 0551-69866216 Fax: 0551-69866218 Mob: 0086-158 5511 0194
- * Web: <https://www.greensunpv.com> & <https://greensunpv.en.alibaba.com>